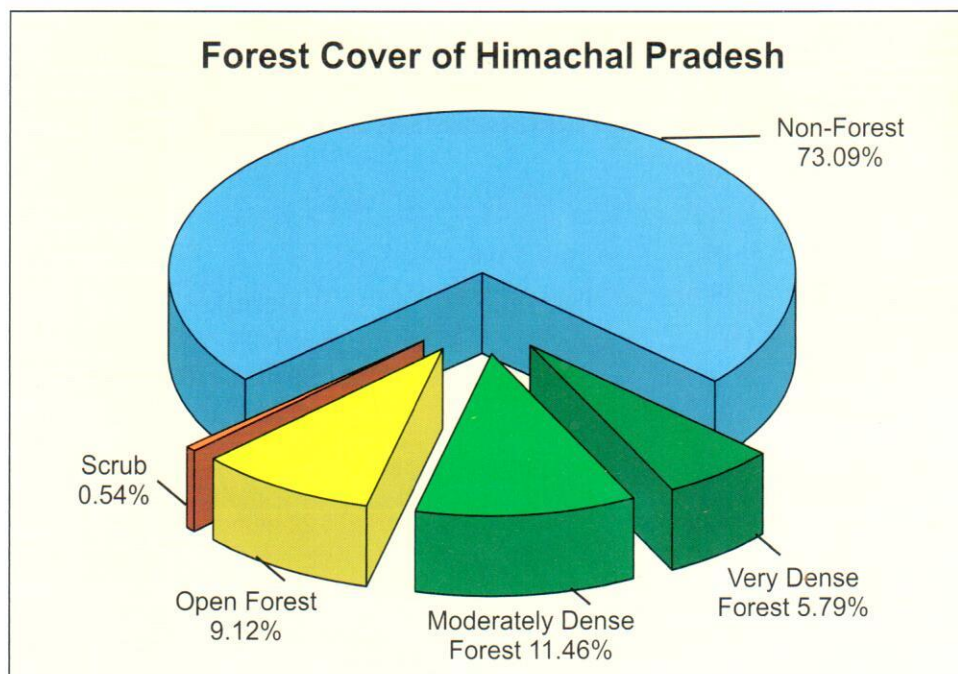


## 9.10 Himachal Pradesh

<b>Geographical Area</b>	55,673 sq km
<b>Population</b> (as per Census 2011)	6.86 million
Urban	0.69 million (10.03 %)
Rural	6.17 million (89.97%)
Tribal	0.39 million (5.71 %)
<b>Average Population Density</b>	123 per sq km
Livestock population (as per 18 <sup>th</sup> Live Stock Census)	5.22 million
<b>No. of Districts</b> (as per Census 2001)	12
No. of Hill Districts	12
No. of Tribal Districts	3

<b>Forest Cover within Green Wash</b>	
Very Dense Forest	2,644 sq km
Moderately Dense Forest	3,776 sq km
Open Forest	2,328 sq km
<b>Sub Total</b>	<b>8,748 sq km*</b>
<b>Forest Cover outside Green Wash</b>	
Very Dense Forest	580 sq km
Moderately Dense Forest	2,605 sq km
Open Forest	2,750 sq km
<b>Sub Total</b>	<b>5,935 sq km</b>
<b>Total Forest Cover</b>	<b>14,683 sq km</b>
<b>Tree Cover</b>	<b>697sq km</b>
<b>Total Forest &amp; Tree Cover</b>	<b>15,380 sq km</b>
Per capita Forest & Tree Cover	0.224 ha
Of State's Geographical Area	27.63%
Of India's Forest & Tree Cover	1.95%

\* One toposheets of 1:250,000 scale was not available and corresponding greenwash area could not be digitized.



Growing Stock	
Growing Stock in Recorded Forest Area	317.30 million cum
Growing Stock in TOF	16.75 million cum
Growing Stock in Agroforestry	15.81 million cum
Growing Stock in Urban area	0.15 million cum

Recorded Forest Area	
Reserved Forest	1,898 sq km
Protected Forest	33,130 sq km
Unclassed Forest	2,005 sq km
<b>Total</b>	<b>37,033 sq km</b>
Of State's Geographical Area	66.52%
Of India's Forest Area	4.80 %



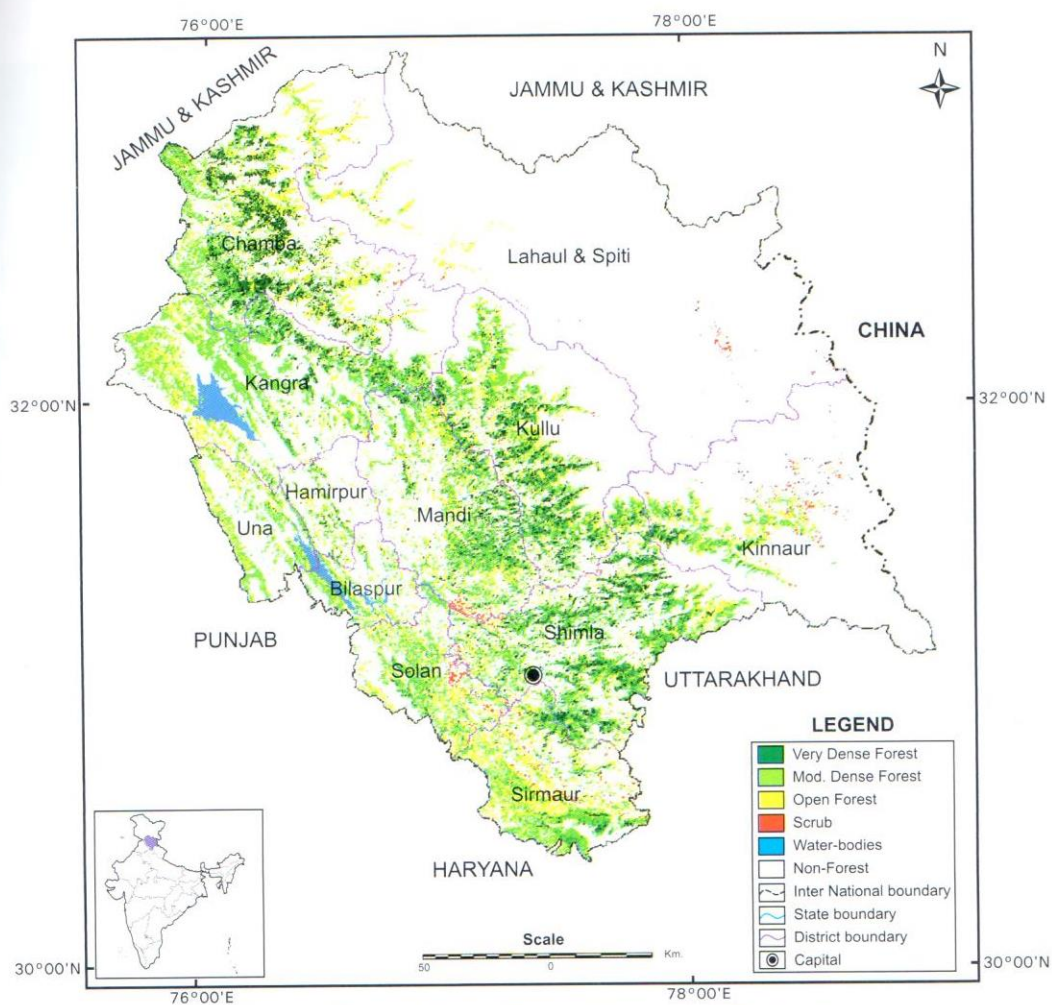


Fig 9.10 Forest Cover Map of Himachal Pradesh

Table 9.10a: District-wise Forest Cover of Himachal Pradesh

District-wise Forest Cover (Area in km <sup>2</sup> )								
District	Geo-graphical Area	2013 Assessment				Percent of GA	Change	Scrub
		Very Dense Forest	Mod. Dense Forest	Open Forest	Total			
Bilaspur <sup>H</sup>	1,167	24	171	167	362	31.02	0	0
Chamba <sup>TH</sup>	6,522	853	773	811	2,437	37.37	0	21
Hamirpur <sup>H</sup>	1,118	39	91	114	244	21.82	0	0
Kangra <sup>H</sup>	5,739	310	1,221	533	2,064	35.96	0	3
Kinnaur <sup>TH</sup>	6,401	82	262	260	604	9.44	4	69
Kullu <sup>H</sup>	5,503	586	785	588	1,959	35.60	0	23
Lahaul & Spiti <sup>TH</sup>	13,841	15	32	147	194	1.40	0	28
Mandi <sup>H</sup>	3,950	373	735	567	1,675	42.41	0	29
Shimla <sup>H</sup>	5,131	739	1,037	610	2,386	46.50	0	31
Sirmaur <sup>H</sup>	2,825	130	568	687	1,385	49.03	0	56

District	Geo-graphical Area	2013 Assessment				Percent of GA	Change	Scrub
		Very Dense Forest	Mod. Dense Forest	Open Forest	Total			
Solan <sup>H</sup>	1,936	55	404	391	850	43.90	0	38
Una <sup>H</sup>	1,540	18	302	203	523	33.96	0	0
<b>Grand Total</b>	<b>55,673</b>	<b>3,224</b>	<b>6,381</b>	<b>5,078</b>	<b>14,683</b>	<b>26.37</b>	<b>4</b>	<b>298</b>

Table 9.10b: Change Matrix of Himachal Pradesh

Forest Cover Change Matrix							(Area in km <sup>2</sup> )
2011 Assessment	2013 Assessment					Total 2011	
	VDF	MDF	OF	Scrub	NF		
Very Dense Forest	3,224	0	0	0	0	<b>3,224</b>	
Moderately Dense Forest	0	6,381	0	0	0	<b>6,381</b>	
Open Forest	0	0	5,074	0	0	<b>5,074</b>	
Scrub	0	0	0	298	30	<b>328</b>	
Non Forest	0	0	4	0	40,662	<b>40,666</b>	
<b>Total 2013</b>	<b>3,224</b>	<b>6,381</b>	<b>5,078</b>	<b>298</b>	<b>40,692</b>	<b>55,673</b>	
Net Change	0	0	4	-30	26		

Table 9.10c: Altitude-wise Forest Cover of Himachal Pradesh

Altitude-wise Forest Cover					(Area in km <sup>2</sup> )
Altitude Zone	VDF	MDF	OF	Total	
0-500	12	433	305	750	
500-1000	228	1,654	1,153	3,035	
1000-2000	648	1,566	1,620	3,834	
2000-3000	1,885	2,023	1,235	5,143	
3000-4000	451	702	739	1,892	
>4000	0	3	26	29	
<b>Total</b>	<b>3,224</b>	<b>6,381</b>	<b>5,078</b>	<b>14,683</b>	

(Based on SRTM, Digital Elevation Model)

### Reasons for change detected in 2013 assessment:

Main reason for increase in forest cover is conservation and afforestation activities